



The Creative Industries in PA State Senate District 45

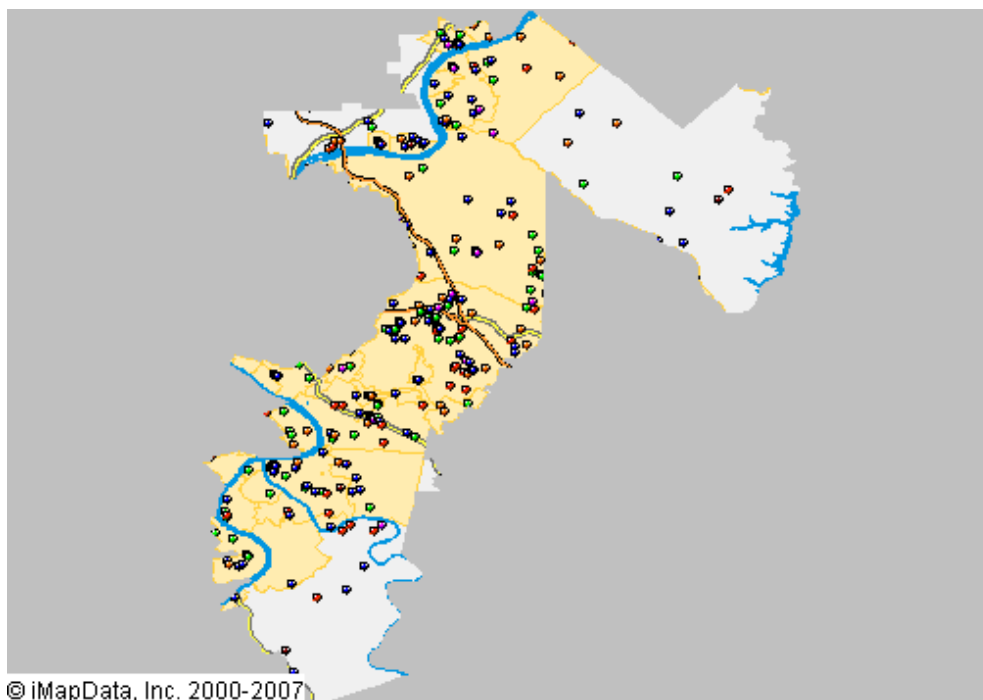
This *Creative Industries* report offers a research-based approach to understanding the scope and economic importance of the arts in **PA State Senate District 45**. The creative industries are composed of arts-centric businesses that range from nonprofit museums, symphonies, and theaters to for-profit film, architecture, and advertising companies. The creative industries are the high-octane fuel that drives the "information economy," the fastest growing segment of the nation's economy.

Nationally, there are 612,095 businesses in the U.S. involved in the creation or distribution of the arts that employ 2.98 million people, which is 4.3 percent of all businesses and 2.2 percent of all employees. Between 2007 and 2008, the number of arts businesses and employees grew 12 percent. The source for these data is Dun & Bradstreet, the most comprehensive and trusted source for business information in the U.S. Growth of the businesses that comprise the creative industries was greater than the increase among the 14.3 million businesses tracked by Dun & Bradstreet.

As of January 2008, PA State Senate District 45 is home to 308 arts-related businesses that employ 1,332 people. These arts-centric businesses play an important role in building and sustaining economic vibrancy. They employ people, spend money locally, generate government revenue, and are a cornerstone of tourism and economic development. The map below provides a clear picture of the creative industries in **PA State Senate District 45**, with each dot representing an arts-centric business.

308 Arts-Related Businesses in PA State Senate District 45 Employ 1,332 People

- Arts-Related Business**
- Museum/Collections
 - Performing Arts
 - Visual/Photography
 - Film, Radio, TV
 - Design/Publishing
 - Arts Schools/Services





Arts-Related Business and Employment in PA State Senate District 45 January 2008

CATEGORY	BUSINESSES	EMPLOYEES
Museums and Collections	6	20
Museums	4	9
Zoos and Botanical	1	9
Historical Society	1	2
Performing Arts	76	214
Music	42	86
Theater	3	27
Services & Facilities	16	64
Performers	15	37
Visual Arts/Photography	106	296
Crafts	15	43
Visual Arts	9	17
Photography	68	165
Services	14	71
Film, Radio and TV	44	565
Motion Pictures	34	479
Television	4	77
Radio	6	9
Design and Publishing	59	137
Architecture	9	31
Design	32	68
Advertising	18	38
Arts Schools and Services	17	100
Arts Councils	1	3
Arts Schools and Instruction	15	52
Agents	1	45
GRAND TOTAL	308	1,332

Note: As the source of these data is based solely on businesses that have registered with Dun & Bradstreet, our analyses indicate an under-representation of nonprofit arts organizations and individual artists. Therefore, this Creative Industries report should be considered a conservative estimate. For more information, maps, and to make sure you are included in our Creative Industries research, visit www.AmericansForTheArts.org/CreativeIndustries



Arts-Related Business and Employment in PA State Senate District 45 2007 to 2008

CATEGORY	BUSINESSES			EMPLOYEES		
	2007	2008	% Change	2007	2008	% Change
Museums and Collections	5	6	20.00%	16	20	25.00%
Museums	4	4	0.00%	7	9	28.57%
Zoos and Botanical	1	1	0.00%	9	9	0.00%
Historical Society	0	1	100.00%	0	2	200.00%
Performing Arts	69	76	10.14%	188	214	13.83%
Music	37	42	13.51%	80	86	7.50%
Theater	2	3	50.00%	19	27	42.11%
Services & Facilities	20	16	-20.00%	69	64	-7.25%
Performers	10	15	50.00%	20	37	85.00%
Visual Arts/Photography	97	106	9.28%	245	296	20.82%
Crafts	14	15	7.14%	45	43	-4.44%
Visual Arts	6	9	50.00%	12	17	41.67%
Photography	62	68	9.68%	118	165	39.83%
Services	15	14	-6.67%	70	71	1.43%
Film, Radio and TV	39	44	12.82%	227	565	148.90%
Motion Pictures	30	34	13.33%	208	479	130.29%
Television	3	4	33.33%	12	77	541.67%
Radio	6	6	0.00%	7	9	28.57%
Design and Publishing	47	59	25.53%	121	137	13.22%
Architecture	9	9	0.00%	29	31	6.90%
Design	23	32	39.13%	53	68	28.30%
Advertising	15	18	20.00%	39	38	-2.56%
Arts Schools and Services	14	17	21.43%	97	100	3.09%
Arts Councils	1	1	0.00%	3	3	0.00%
Arts Schools and Instruction	12	15	25.00%	49	52	6.12%
Agents	1	1	0.00%	45	45	0.00%
GRAND TOTAL	271	308	13.65%	894	1,332	48.99%

Data Source: D&B January 2008 & January 2007

www.AmericansForTheArts.org