

**PUBLIC ART OPPORTUNITY
Request for Qualifications
Ann Katharine Seamans Memorial Garden
Pittsburgh, Pennsylvania**

**Postmark Deadline for Applications: March 3, 2008
Budget: \$50,000**



The Pittsburgh Parks Conservancy is working with the Office of Public Art to commission an artist to be a part of the design team for the Ann Katharine Seamans Memorial Garden. The Garden will be located in Mellon Park in the Shadyside neighborhood of Pittsburgh. The artist budget for the project is \$50,000. The Garden will be dedicated in Fall 2009.

A. Project Overview:

Mellon Park was the original estate of Richard Beatty Mellon in the 20th century. The glory days of the estate grounds and house were in the 1930s. The sixty-room mansion was the largest house built in Pittsburgh, sitting on a hilltop in Shadyside. With the second World War and the growth of Pittsburgh's mighty steel industry came the desire of many of the wealthy to abandon the city for the cleaner air of the countryside. Although the house was torn down in 1941, extensive remnants of the terraced formal gardens still exist. In the 1940s and '50s, the estate transitioned into a city park and fell into disrepair starting in the 1970s. The park is home to the Phipps Garden Center, and the gardens have benefitted over the years from the efforts of garden club volunteers and master gardeners in training. In 1999 a master plan public process began that has already resulted in several improvement projects, the first of which was the rebuilding of the wall and fence around the perimeter of the park. Several other restoration projects have been completed, including the reconstruction of the northern esplanade and balustrade, the fountain wall, and flagstone walks within the walled garden. The historic integrity of the park has been the primary focus in every plan.

LaQuatra Bonci Associates, a Pittsburgh landscape architecture firm, will provide services for the design and oversight of installation of the garden and will work closely with the selected artist. Conceptual plans call for restoring the historic walled garden, a 200'x120' space that is surrounded on three sides with beautiful brick walls. It is anchored at one end with a flagstone terrace and fountain and opens into the rest of Mellon Park at the other end. Proposed enhancements include restoring the central lawn and adding planting, lighting, and seating. The garden is small but has plentiful opportunities for the integration of art. Further design development will wait until an artist has joined the team as it will be vital for the artist and landscape architect to work collaboratively to create a harmonious space. If appropriate, LaQuatra Bonci will assist the artist with details for installation and layout.

This garden will be funded in part by the family and friends of Ann Katharine Seamans. Her parents have been working with LaQuatra Bonci to initiate the creation of the garden. The Seamans sought to include an artist to contribute to the design team, and desire a work(s) of art for the park that are intimately scaled and beautifully made. The artist for this project will be expected to work very closely with the landscape architects and other project stakeholders to develop a vision for art in the park.

To view photographs and conceptual plans for the park, visit the website, www.pittsburghparks.org/mellonpark.

B. Vision Statement for Ann Katharine Seamans Memorial Garden:



This is a space that once provided tranquility and beauty to a single family. It's now a public garden but lacks shade, seating, and richness of artistic detail. The goal is to enhance an intimate natural room that is set in a larger park. It could be a special place for families to enjoy and for children to explore ... a little world unto itself that opens outwards towards the larger, active park space beyond. There is an enchanted aspect to the garden which art will enhance, drawing children in, inviting them to enjoy the interplay of plantscape and hardscape. Simplicity and enduring beauty are key; in plants as well as in art and building materials the feeling should be subtle, detailed, craftsmanly, humorous, executed with a light and loving touch.

Annie Katharine Seamans was an accomplished young sculptor and dancer who loved the garden because it felt safe to her and because, intrinsically, she knew it was beautiful; it is both a refuge and a jewel. She first went there when she was in kindergarten and used to return with her friends to have picnics even when she was in high school. Today, her friends sometimes go there to remember her.

C. Objectives and Opportunities for Art

The art commissioned for the garden will be of the highest quality and will directly respond to the vision statement for the garden. Rather than having an immediate and fleeting impact, the desire is to have the artwork discovered by visitors to the garden and for the artwork to have lasting meaning and impact. The design team has not prescribed locations for art, but is seeking an artist who will bring their sensibility to the design team.

Empowering the people who give us art.



The art for the park can be integrated into the landscape, free standing, take on a function such as lighting or seating, or a combination.

The artwork for the park will be permanent in nature, and must endure Pittsburgh's climate and a variety of park uses.

D. Budget

The art budget for the Ann Katharine Seamans Memorial Garden is \$50,000. The budget includes: all artist design fees; artist travel; artist models and renderings of artworks not integrated into the construction documents; the fabrication, transportation, and installation of artworks not integrated into the construction; required insurance; signage for the artworks; and documentation of the final art installation(s).

E. Selection Process

The Office of Public Art is facilitating the artist selection process for the garden. The process will occur in two stages. During the first stage, all qualifications submitted through the RFQ process will be reviewed by the selection committee. The committee will invite a limited number of artists to travel to Pittsburgh for an interview and site visit.

The artists who are asked to interview for the project will not be asked to develop a model or proposal. During the second stage, the interview process, artists will discuss their past work, their ability to work on a design team, and their interest in this particular project. Artists who are being interviewed for the commission will have travel expenses reimbursed up to \$1,000. One artist will be selected to receive the commission.

Following selection, the artist will enter into a contract with the Pittsburgh Parks Conservancy, the project manager, to become a member of the design team.

F. Project Timeline

February 2008:	Circulation of artist RFQ
February 18, 2008:	Artist Information meeting
March 2008:	Review of Qualifications by Artist Selection Committee
April 2008:	Artist Interviews, Finalist Selected and Artist Contract Completed
May – June 2008:	Design Team Work Sessions with Artist
June 2008:	Public Review and Feedback Process
August 2008:	Design Team Work Session with Artist to Finalize Artwork and Detailing
September 2008:	Complete Contract Documents
September 2008:	Bidding
Early October 2008:	Begin Construction
May 2009:	Complete Construction
Summer 2009:	Park Rests and Grows
Fall 2009:	Park Dedication

G. Selection Criteria

This RFQ is open to all artists living in the United States who have the vision and skills required to work on a design team and to complete artworks that embrace the vision for this public garden. Artist teams, and teams that include individuals working in multiple fields, are eligible to apply.

Empowering the people who give us art.

Artists from Pittsburgh and the Pittsburgh region who qualify are strongly encouraged to apply.

The selection committee will take into consideration an artist's past work, experience working in the public realm, and experience working with landscape architects or other design professionals.

H. Submission Process

This application requires that artists submit examples of their work in digital format. **Slides and prints will not be accepted.**

Submit the following materials:

1. A CD with 10 images of your past work. Images should be in JPG format, no larger than 5" x 7" and 300 dpi. Each image should be no larger than 1MB.

Please label your JPGs with your last name, first initial and the numbers 1-10. For example, if your name is Gertrude Stein, the first artwork on your disc should be stein_gertrude_1.jpg and the second image should be stein_gertrude_2.jpg.

2. A script that includes a short description of each artwork on the CD. A digital copy of this script must be included on the CD, and a paper copy must be included in the application. The description for each image should include the following information as applicable: artwork title, dimensions, materials, budget, location, and a brief summary.
3. A copy of your artist statement.
4. A letter describing why you are interested in working on this project.
5. A copy of your resume, up to three pages.

Submissions must be postmarked by March 3, 2008. They may also be dropped off at the Greater Pittsburgh Arts Council until 4:00 PM on March 3rd. Emailed applications and late applications will not be accepted.

Artist teams may submit a combined total of up to 10 images total, not 10 images for each artist.

Mail applications to:

Office of Public Art
Attention: Mellon Park Project
707 Penn Avenue, 2nd Floor
Pittsburgh, PA 15222

I. Artist Information Meeting

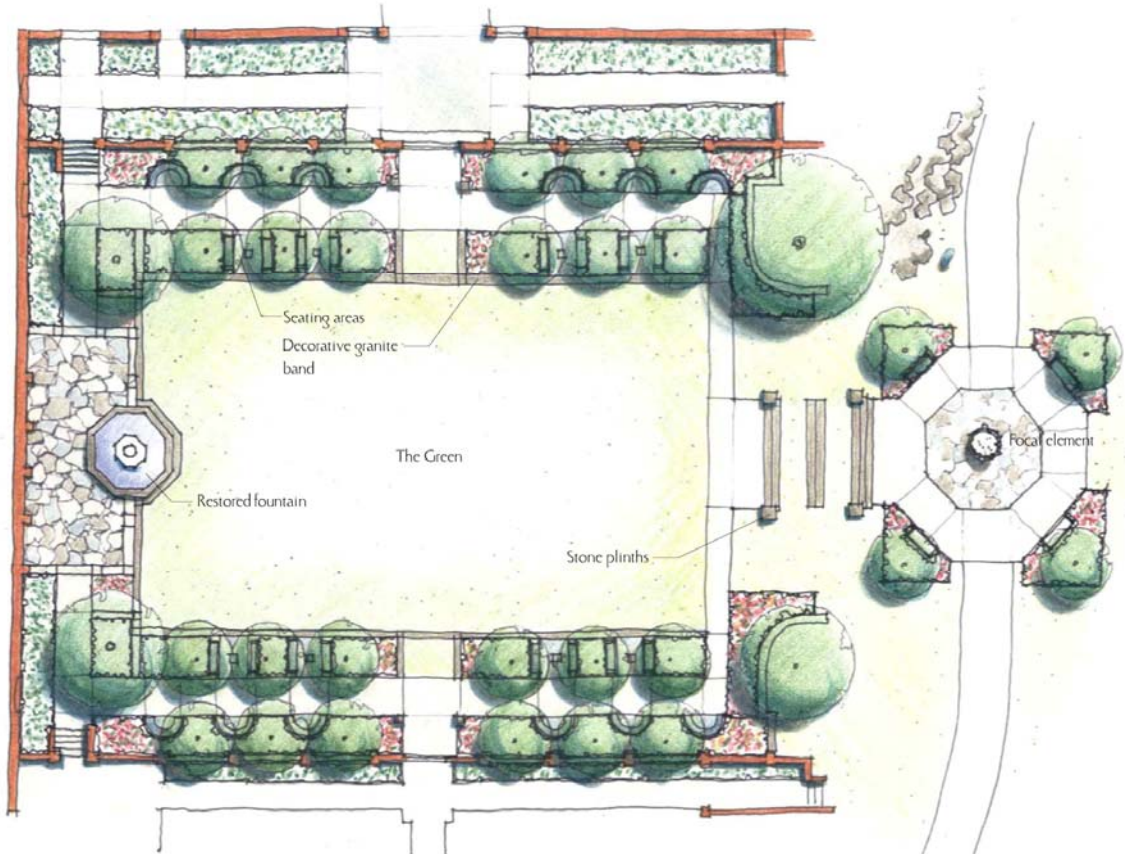
The Office of Public Art welcomes artists to attend an information meeting about the RFQ process on Monday, February 18, 2008 from 6-7pm. The meeting will be held at the Pittsburgh Center for the Arts, Scaife Building, 2nd Floor, 1047 Shady Avenue. Please RSVP to opa@pittsburghartscouncil.org by 9am on February 18th if you plan to attend.

At this meeting, the Office of Public Art will discuss the application process and respond to questions. This meeting is not required to submit an RFQ.

Empowering the people who give us art.

J. Contact Information

If you have questions regarding this RFQ, please contact Renee Piechocki or Lea Donatelli, Office of Public Art, 412-391-2060 x 233 or opa@pittsburgharts council.org.



Empowering the people who give us art.